







CIRCULAR FASHION

**Specimens arranged : on shelf**



# Museum







## EMBRYOLOGY MODELS











## NEUROANATOMY

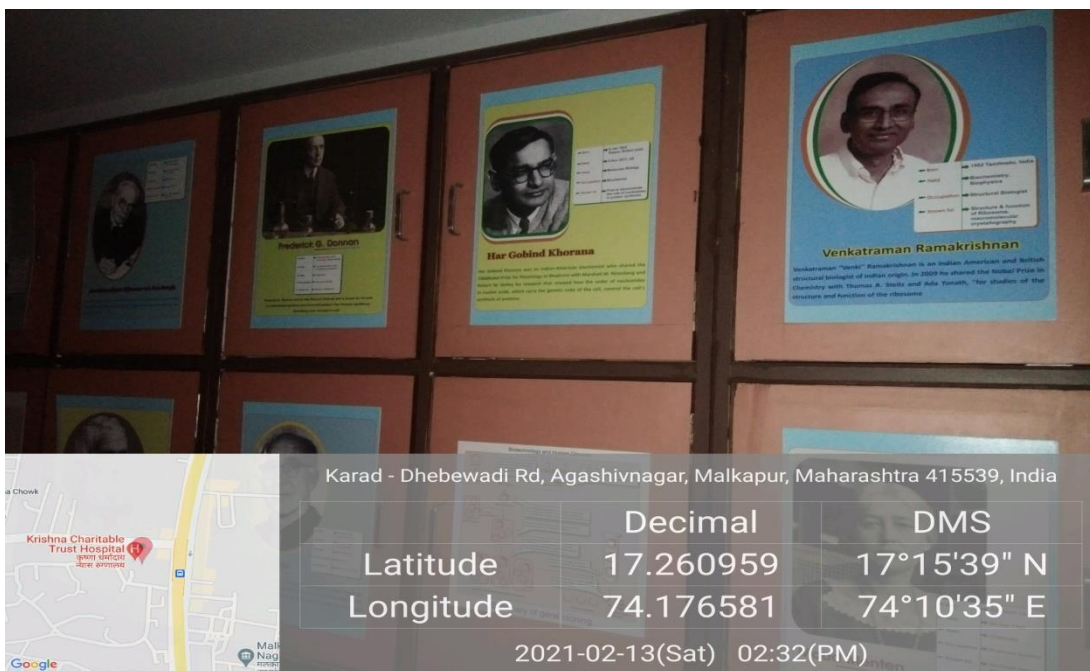


## FOETUS



SKELETONS

# Biochemistry Museum





NH4, Pune - Bangalore Highway, Dist.Satara, Agashivnagar, Malkapur, Maharashtra 415539, India

	Decimal	DMS
Latitude	17.26096	17°15'39" N
Longitude	74.176347	74°10'34" E

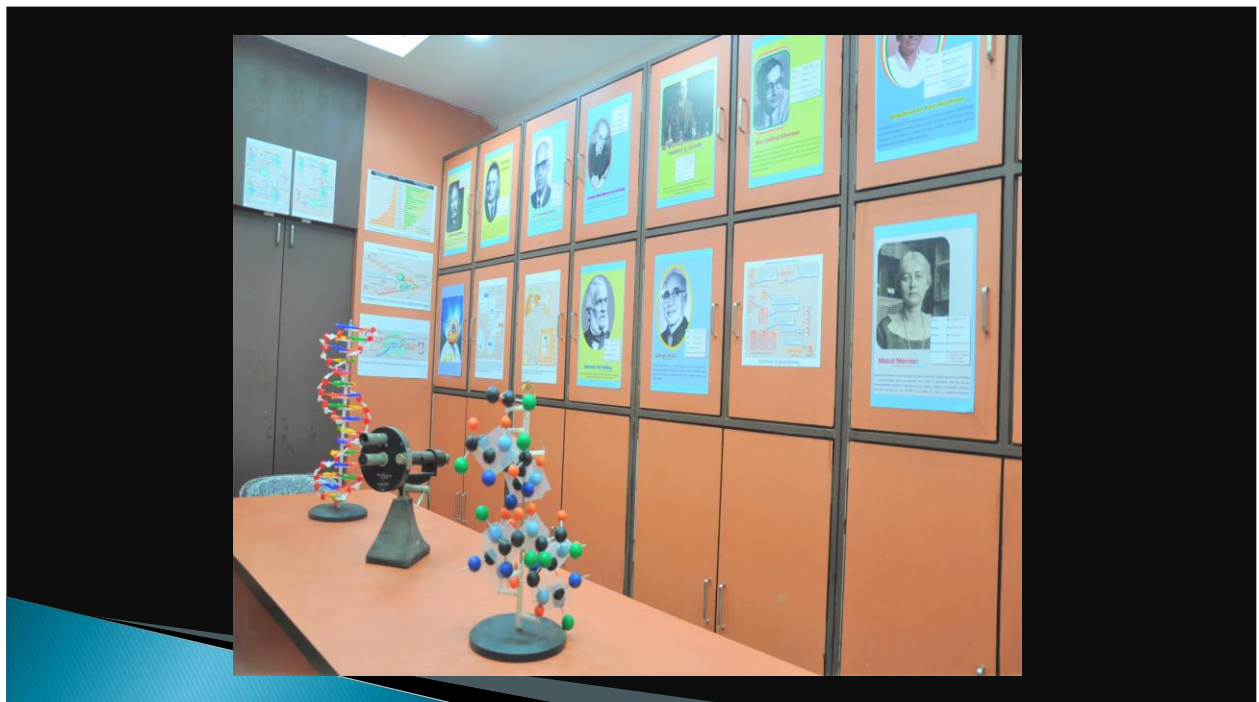
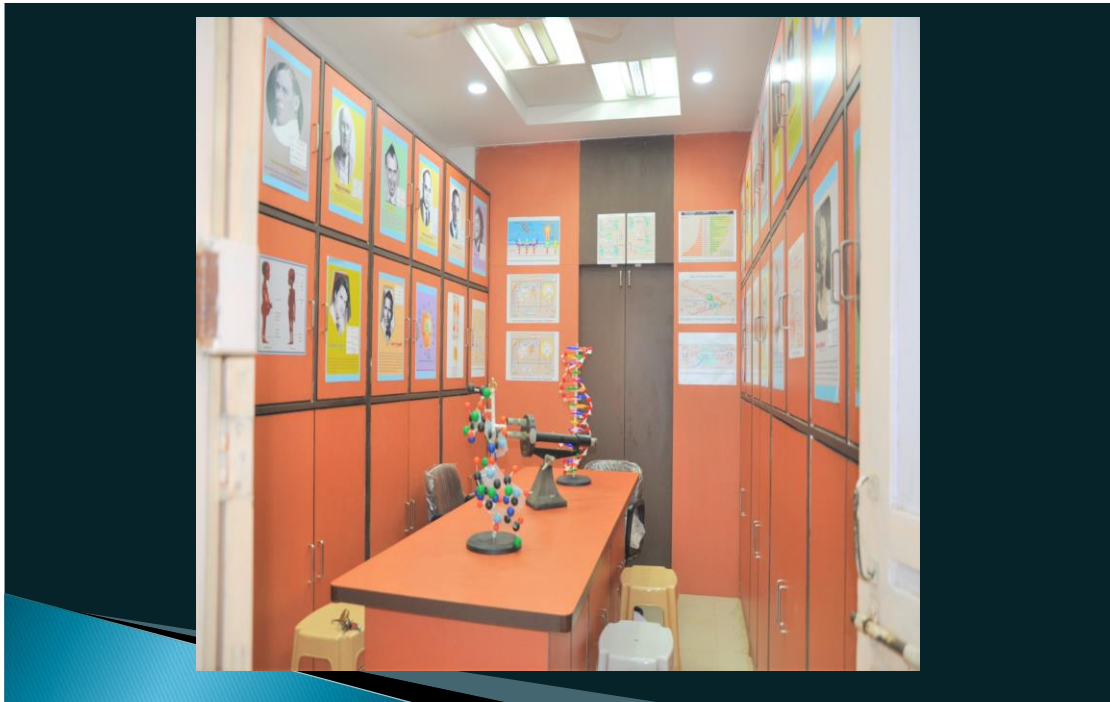
2021-02-13(Sat) 02:34(PM)

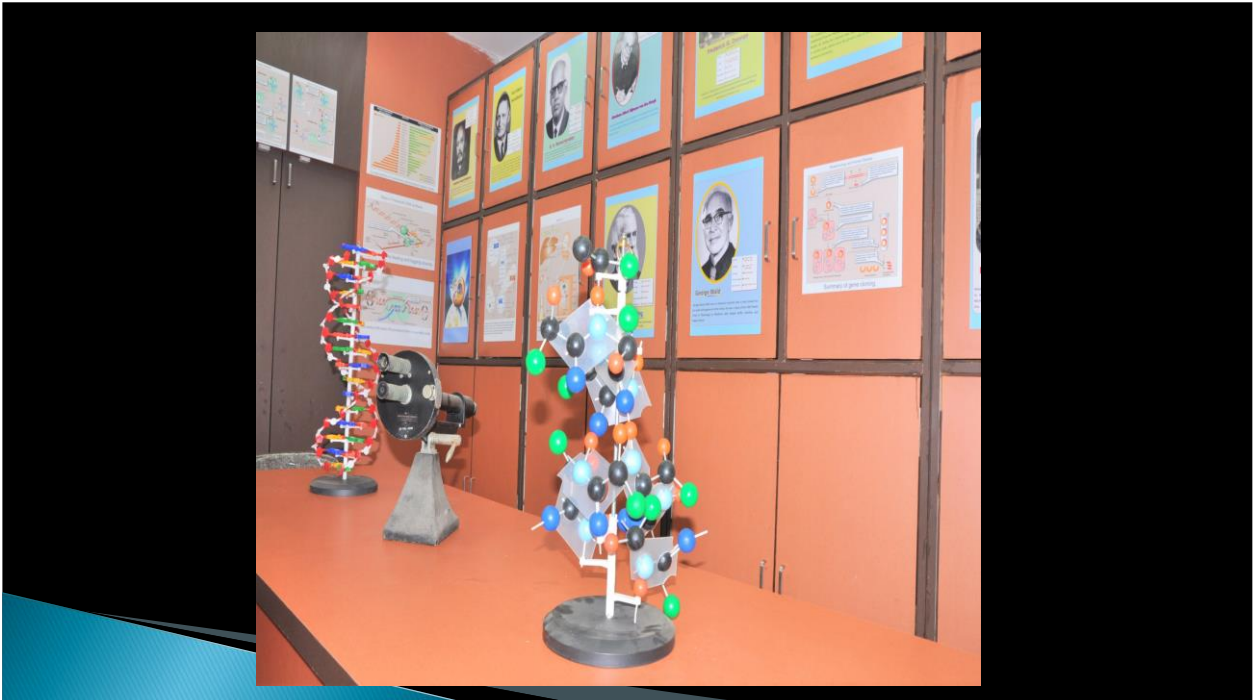
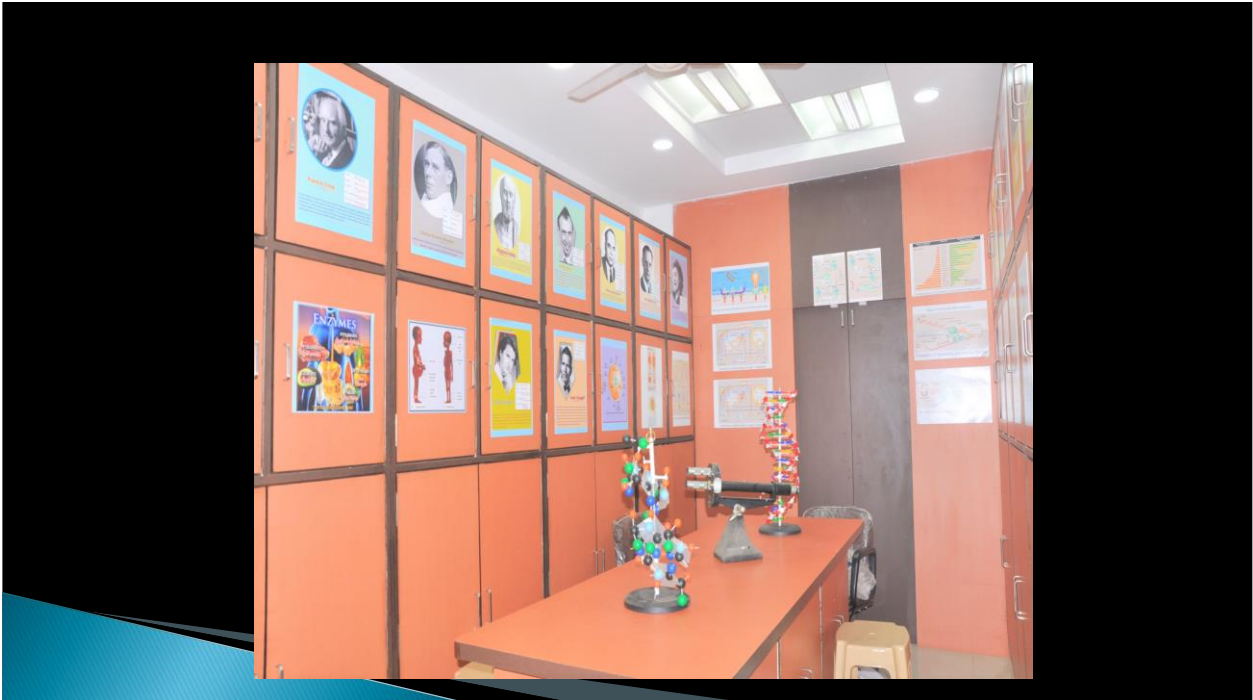


Karad - Dhebewadi Rd, Agashivnagar, Malkapur, Maharashtra 415539, India

	Decimal	DMS
Latitude	17.260959	17°15'39" N
Longitude	74.176581	74°10'35" E

2021-02-13(Sat) 02:32(PM)





**FMT Museum**





Karad - Dhebewadi Rd, Agashivnagar, Malkapur, Maharashtra 415539, India

	Decimal	DMS
Latitude	17.260956	17°15'39" N
Longitude	74.176609	74°10'35" E

2021-02-13(Sat) 02:49(PM)



NH4, Pune - Bangalore Highway, Dist.Satara, Agashivnagar, Malkapur, Maharashtra 415539, India

	Decimal	DMS
Latitude	17.260971	17°15'39" N
Longitude	74.176511	74°10'35" E

2021-02-13(Sat) 02:49(PM)

## FMT Museum-Front view



## Snakes



## Snakes



## Firearms



## Weapons



## Wax Models



## Poisons



## Wet specimens



## Wet specimens



## Moot Court

## Poisons



## Toxicological Garden





# Pathology Museum



## RARE SPECIMENS





696/89 - Nephroblastoma Rt. Kidney (Wilm's tumor)



8/20/2012 Complete Pentalogy of Cantrell with associated rare anomalies with pheconyilia.

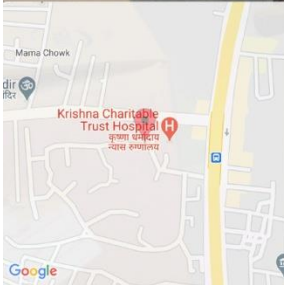


224/99 - Pyelonephritis with Pyonephrosis Rt. Kidney



861/09 Multiple Fibroid Uterus.

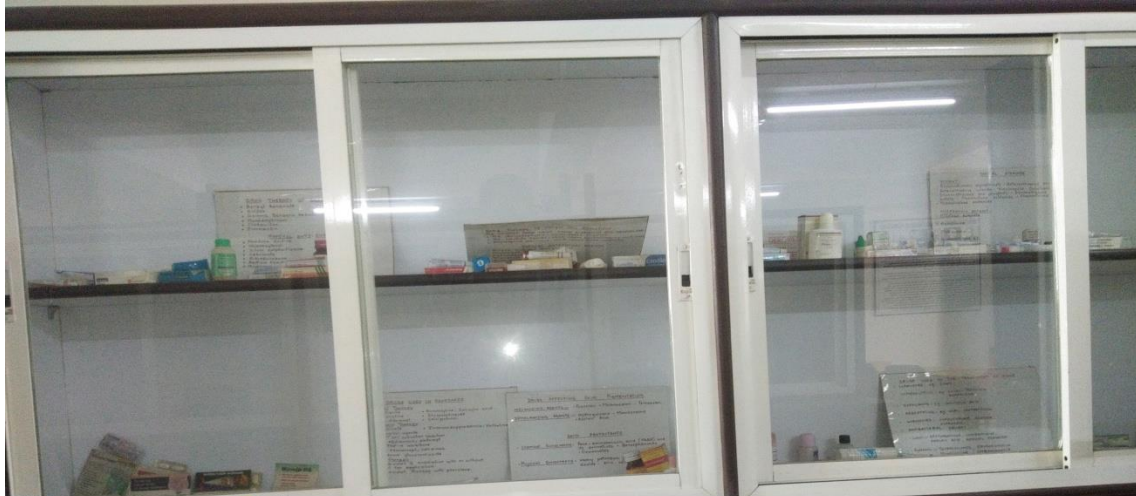
# Pharmacology Museum



Karad - Dhebewadi Rd, Agashivnagar, Malkapur, Maharashtra 415539, India

	Decimal	DMS
Latitude	17.261001	17°15'39" N
Longitude	74.175809	74°10'32" E

2021-02-13(Sat) 02:57(PM)



Karad - Dhebewadi Rd, Agashivnagar, Malkapur, Maharashtra 415539, India

	Decimal	DMS
Latitude	17.261107	17°15'39" N
Longitude	74.175647	74°10'32" E

2021-02-13(Sat) 02:57(PM)

### GRANDFATHER OF PHARMACOLOGY

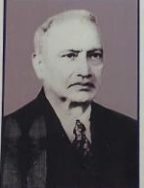


**PARACELSUS**  
1493-1541

**Paracelsus** - His real name was Philippus Aureolus Theophrastus Bombast von Hohenheim. He graduated as a doctor from Ferrara, Italy & experimented with chemistry & alchemy. He united chemistry with medicine & advocated the belief that illness is a derangement of body chemistry to be treated by simple chemical therapeutic agents. He appeared upon the European scene at the beginning of the Renaissance, being a contemporary of Columbus, Martin Luther & Michelangelo. He attacked the Galenic system of Polypharmacy & introduced the use of simple chemicals rather than the complex and mixed vegetable preparations of Galen. He wrote "It is the task of chemistry to produce medicines for the treatment of disease since the vital functions of life are basically chemical in nature." He wrote the best

clinical description of syphilis up to that time, maintaining that it could be successfully treated by carefully measured doses of mercury compounds taken internally, thus foreshadowing the Salvarsan treatment of 1909. He recognised the relationship between the amount of a drug administered & the beneficial or harmful effects produced, for he wrote: "All things are poisons, for there is nothing without poisonous qualities. It is only the dose which makes a thing a poison". These statements are still cornerstones of pharmacologic thought today, since it is now recognised that drugs are chemicals that alter biologic chemistry & that their selectivity is affected by the dose.

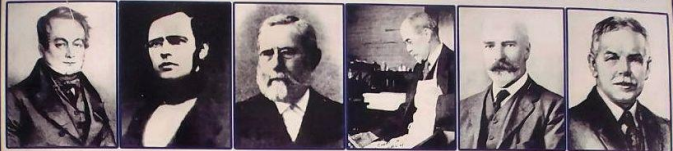
### FATHER OF INDIAN PHARMACOLOGY



**SIR. RAM NATH CHOPRA**  
1882-1973

**Sir Ram Nath Chopra** was trained under Prof. W.E. Dixon at University of Cambridge, U.K. He was 1st Prof. of Pharmacology at the School of Tropical Medicine & Calcutta Medical College in 1922. He laid the foundation of scientific investigation on Indian indigenous drugs. He was the Founder Director of the Drug Research Laboratory, which is now known as the Regional Research Laboratory of the Council of Scientific and Industrial Research [CSIR], located at Jammu-Tawi. He was responsible for the development of pharmacology as a well defined discipline in India. Sir Chopra has been widely acclaimed as the Father of Indian Pharmacology.

### IMPORTANT FIGURES IN THE EARLY HISTORY OF PHARMACOLOGY



**F. MAGENDIE** 1783-1855    **R. BUCHEIM** 1820-1879    **O. SCHMIEDEBERG** 1838-1921    **JOHN J. ABEL** 1857-1938    **A.R. CUSHNY** 1866-1926    **REID HUNT** 1870-1948

**Francois Magendie**- The 1st pharmacologist. In late 18th & early 19th centuries he, & later his student Claude Bernard, began to develop the methods of experimental animal physiology & pharmacology.

**Rudolph Bucheim**- Established the 1st laboratory devoted to drug research in Dorpat, Estonia in 1847. Occupant of 1st chair of pharmacology at University of Dorpat.

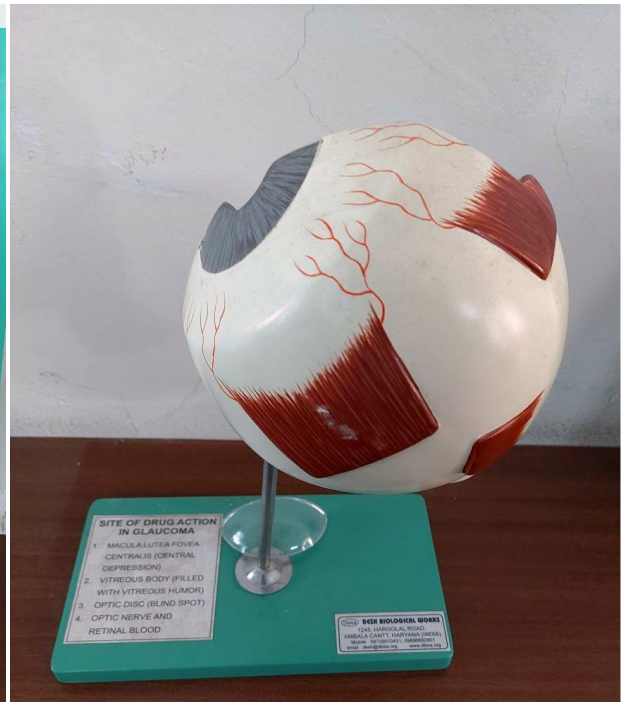
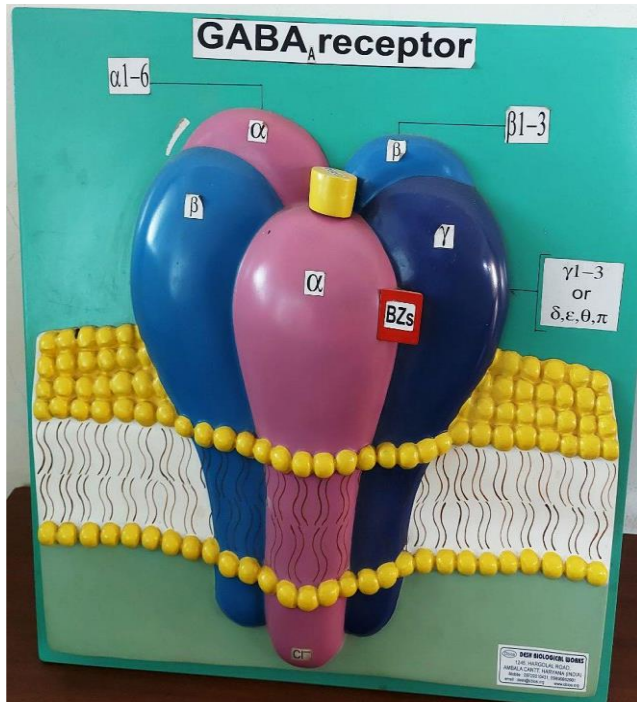
**Oswald Schmiedeberg**- Pupil of Bucheim & successor at Dorpat. Occupant of 1st chair of pharmacology at Strassburg in Germany. Conducted research on pharmacology of diuretics, cardiac glycosides & emetics.

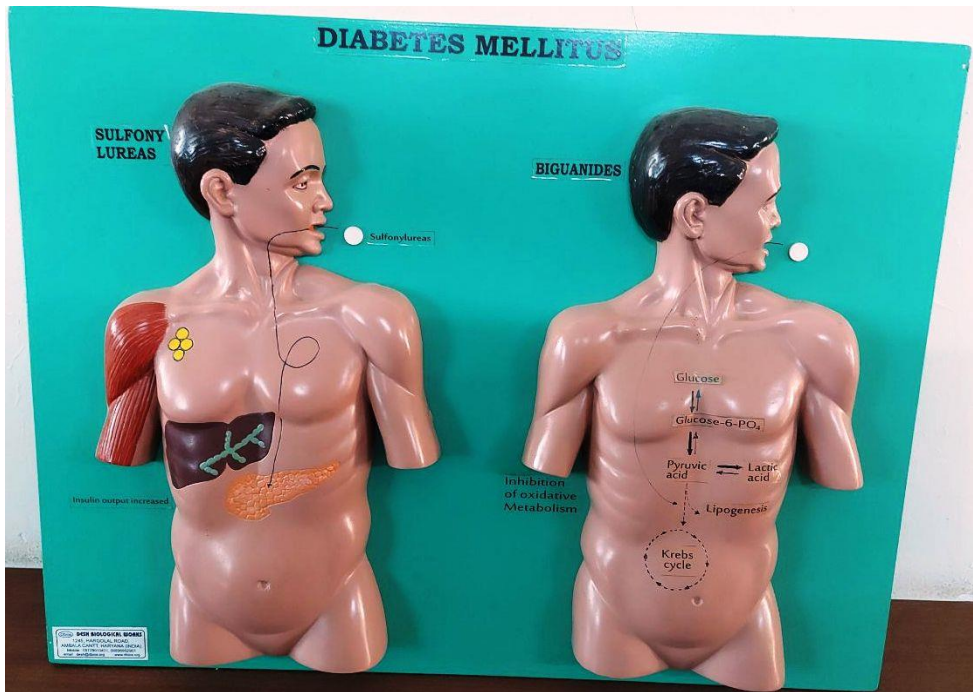
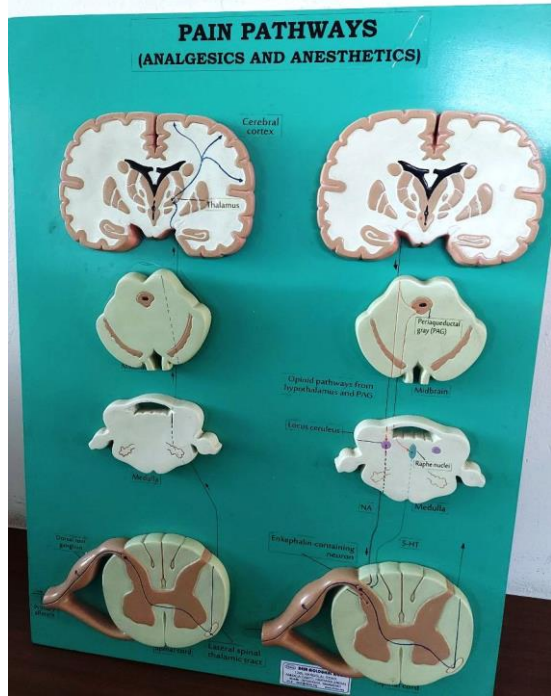
**John J. Abel**- Outstanding student of Schmiedeberg's. Father of American pharmacology. Occupied the chair of pharmacology 1st at University of Michigan & then at John Hopkins University. In 1900 he isolated adrenaline from adrenal medulla as a benzoyl derivative. Founded Journal of Pharmacology & Experimental Therapeutics. Was responsible for rise of experimental pharmacology in USA.

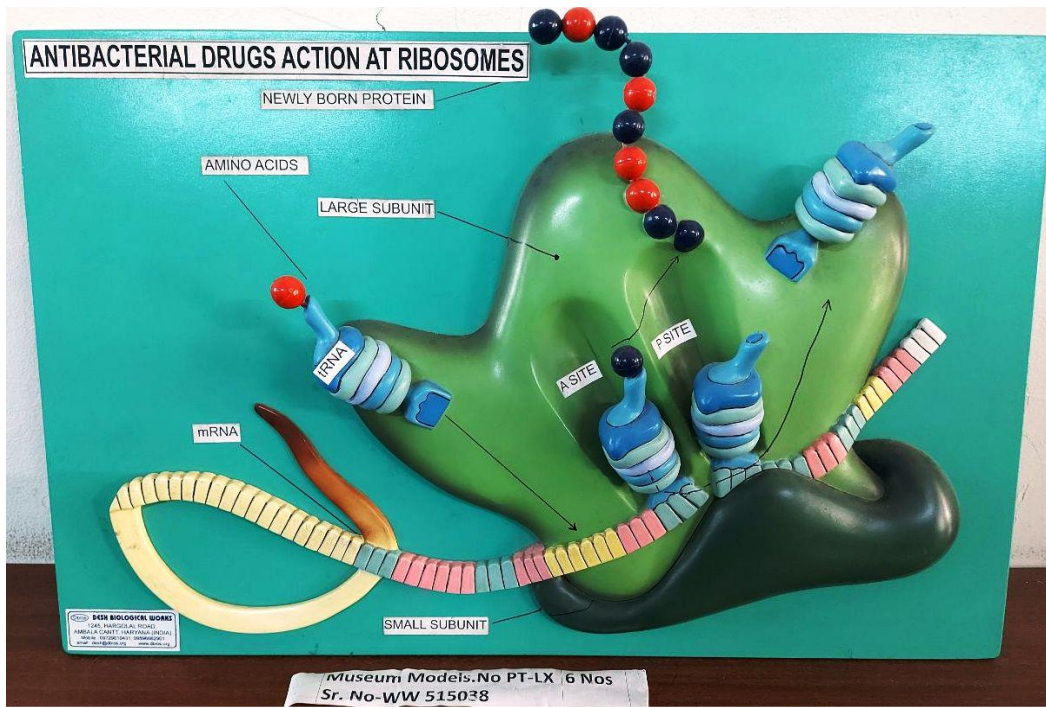
**Arthur R. Cushny**- Brilliant student of Schmiedeberg's. Succeeded Abel as Professor at University of Michigan in 1893. Was appointed 1st Professor of Pharmacology at University College, London in 1905. From 1918-1926 was Professor of Pharmacology at Edinburgh.

**Reid Hunt**- In 1905, while working in Abel's laboratory, isolated acetylcholine from the adrenal medulla and studied its actions.











# PSM Museum

## MODEL

- **Kwashiorkor :-** It is mainly due to protein deficiency. The child is dull, apathetic, disinterested in surroundings and hardly moves from sitting position. Face becomes moon shaped with moderate growth retardation. Edema is present but muscle wasting is masked due to it and fat is often retained. Hairs are lusterless and show positive flag sign with sparse distribution, loss of curliness and easily pluckable. Mental changes are prominent with skin dermatitis. Liver is enlarged and prognosis is bad. The serum total proteins and serum cholesterol levels are reduced



## MODEL

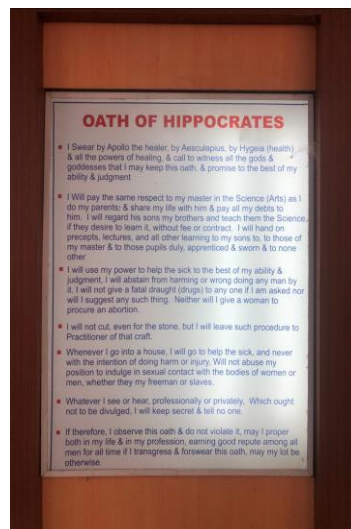
- **Marasmus:-** It is mainly due to deficiency of calories. The child is alert but irritable and there is severe growth retardation with severe muscle and subcutaneous fat loss. The hair shows change in texture, thin and silky and no flag sign. There is no edema, liver enlargement, mental changes and skin changes. Prognosis is good. The serum total proteins and serum cholesterol levels are within normal limits.



# Fruits & Veg. Models



# Displayed Charts



## Displayed Charts



## DISINFECTION OF WELL



## Sanitary well



## Students Model

- Go Smokeless



## Students Model

- Under Ground Sewer



## E - WASTE

- E - WASTE



# Biogas Plant



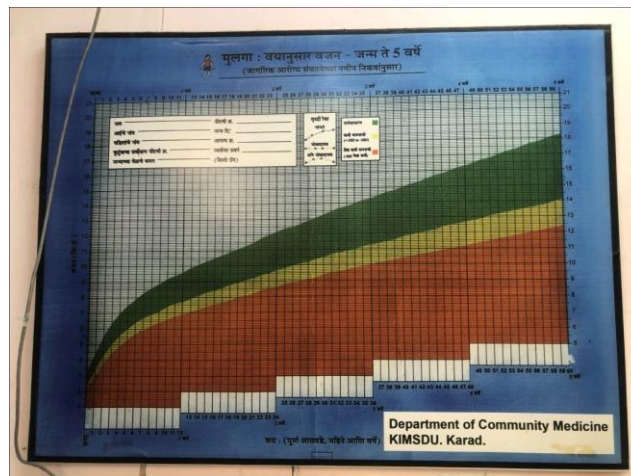
# E WASTE



# Methods of contraception



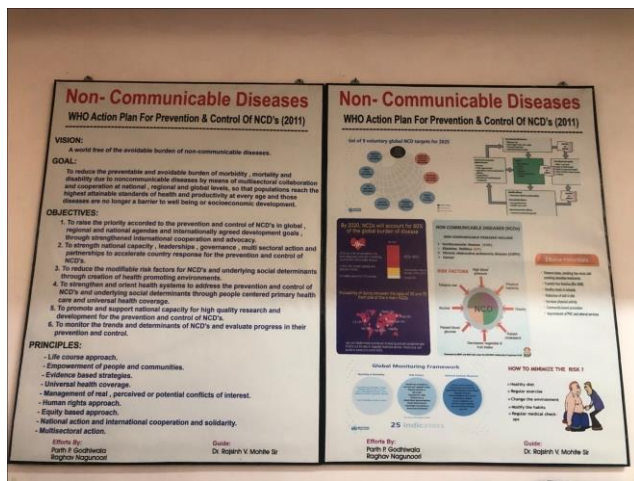
# Growth Charts



# Displayed Charts



# Displayed Charts





# Displayed Chart




# Displayed Charts




## Displayed Chart



## jaagatik stnapan AazvDa

 जागतिक स्तनपान आठवडा २०१६  
१ ऑगस्ट ते ७ ऑगस्ट  
"शाश्वत विकासाची गुनकिल्ली म्हणजेच स्तनपान"

  
असेल स्तनपान व पोषक आहाराची जोड बाळाच्या निरोगी आयुष्याला नाही तोड

पहिले ६ महिने निव्वळ स्तनपान करावे आणि नंतर पूरक आहार द्यावा

यामुळे तुमच्या बाळाचा संपूर्ण विकास होईल. ते समाधानी व निरोगी असेल तसेच त्याची शीट बजसवाढ होईल.

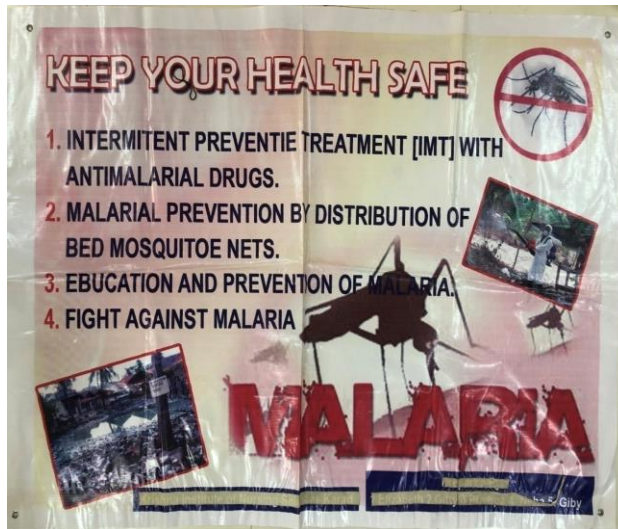
- \* आईचे पहिले शीक दुध, बाळासाठी पोषक तत्वांनी भरपूर
- \* बाळाला पहिले सहा महिने निव्वळ स्तनपान द्यावे.
- \* ६ महिने पूर्ण झाल्यावर स्तनपानबरोबर घरेषा आहार द्या
- ७ ते १२ महिने: १ वाटी आहार दिवसातून ३-४ वेळा
- १२ महिने ते २ वर्षे : दिव्य वाटी आहार दिवसातून ३-४ वेळा
- २ वर्षांपुढे घरातील सर्वांसाठी बनवलेले जेवण बाळकास कमीत कमी ३ वेळा

Department of Community Medicine, KIMSUDU, Karad

# Breast feeding



# MALARIA



# LUNG CANCER

**SMOKING CAUSES LUNG CANCER**

**LUNG CANCER**

Common risk factors for lung cancer:

- Occupational exposure (asbestos, lead, nickel, chromium)
- Smoking (tobacco)
- Second-hand smoke
- Family history
- Radon gas
- Age
- Other respiratory tract infections (HIV, tuberculosis)
- Pollution
- Exposure to asbestos

**LUNG CANCER SYMPTOMS**

- Hoarseness of voice
- Chest pain
- Change in chronic cough
- Feeling a lump in the throat or trouble swallowing
- Weight loss
- Shortness of breath

**PREVENTION**

**LUNG CANCER RISK ASSESSMENT**

If you answer yes to all of the statements below, you are at a higher risk for lung cancer:

1. I am over the age of 50.
2. I have smoked 10 pack-years or heavier of cigarettes, or 25 pack-years of low tar, low nicotine cigarettes, or 10 pack-years of pipe or cigar use.
3. I have been exposed to asbestos, radon, or other lung carcinogens.

**NO SMOKING!**

**HYPERTENSION (3rd World)**

**WORLD HYPERTENSION DAY** - May 2018

**HIGH BLOOD PRESSURE**

**CLASSIFICATION**

**CAUSES FOR HYPERTENSION**

- Obesity
- Stress
- Genetics
- Age
- High cholesterol
- Diabetes
- Excessive alcohol consumption
- Excessive salt intake
- Excessive caffeine intake
- Excessive tobacco use
- Excessive stress
- Excessive physical inactivity
- Excessive emotional stress
- Excessive economic stress

**RISK FACTORS**

- Age
- Family history
- Obesity
- Stress
- High cholesterol
- Diabetes
- Excessive alcohol consumption
- Excessive salt intake
- Excessive caffeine intake
- Excessive tobacco use
- Excessive stress
- Excessive physical inactivity
- Excessive emotional stress
- Excessive economic stress

**SYMPTOMS**

- Headache
- Dizziness
- Nausea
- Blurred vision
- Chest pain
- Shortness of breath
- Swelling in the legs
- Excessive fatigue
- Excessive stress
- Excessive physical inactivity
- Excessive emotional stress
- Excessive economic stress

**TREATMENT**

- Medication
- Exercise
- Dietary changes
- Stress management
- Weight loss
- Smoking cessation
- Alcohol moderation
- Regular medical check-ups
- Regular blood pressure monitoring
- Regular physical activity
- Regular emotional support
- Regular economic support

**MEMBER: Dr. J. KUMHAR**  
**Made by: Sona Kumar (MSB 2018)**

# TRASH FREE PERIOD

## PROPER DISPOSAL

- Disposal bags with colour indication.
- Sanitary dispenser in menstrual friendly toilets.
- Disposal of menstrual waste Separately.
- Incineration at high temperature.

## IMPROPER DISPOSAL

## GREEN THE RED

- Menstrual cups.
- Reusable Tampons made of bamboo, wool, cotton.
- Bamboo/fibre pads.
- Water hyacinth pads.
- Incineration in controlled environment above 500°C.

CARD: Dr. Lakshmi Prasad  
With support from...

## HAZARD

- Environment**
  - Landfills grow in size, non-biodegradable menstrual waste takes 100 years to degrade.
  - Plastic used in commercial pad & in plastic carry bags.
  - Organochlorines in pads when burnt in soil kills microflora.
  - Breeding grounds for flies and microbes.
- Biological pathway**
  - Toxic substances.
  - Disposal sites.
- Health in Toilet**
  - Release of harmful germs when burnt.
  - Throwing into rivers and wells.

## Dental Museum

# Ferris Wheel of Dental Myths



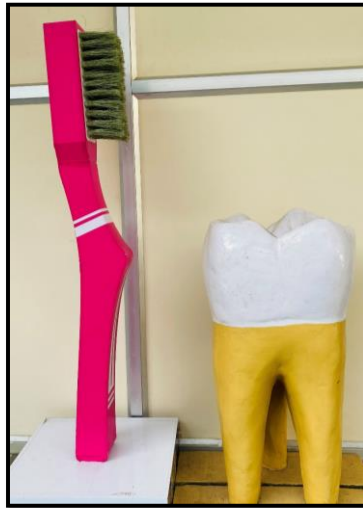
# De-addiction Roller Coaster



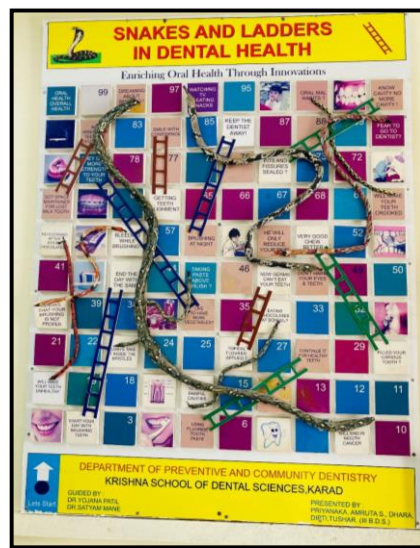
Ø ≠ £1'



# Life-Size model of Tooth and Toothbrush

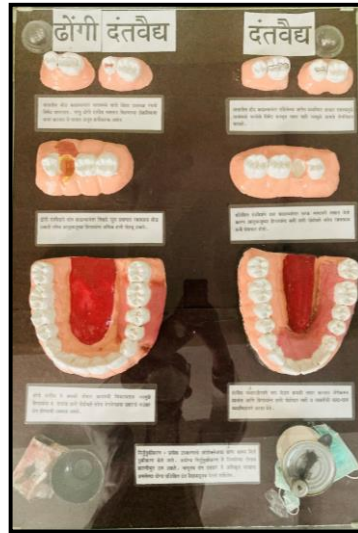


# Snake & Ladder in Dental Health





# Dentists V/S Quacks



# CINEMASCOPE



# Oral Hygiene Aids



# Tooth Fracture

